

Water & Land Biomes

By: Wyatt Grannes



Tropical Rainforest

- A warm climate all year
- Lots of animals
- Big trees

Location mostly
found in South
America but can be
found in other parts
of the world except
Europe.



Yucca plant



Poison Dart Frog



Puma
Mammal



Quetzal Bird

- Location
Can be found in Eastern half of the United States, Canada, Europe parts of Russia, China and Japan

DECIDUOUS FOREST

- Not much rain through out the year.
- It may grow in cooler climates and places.
- Losing leaves helps the tree and food during winter.



White-tailed Deer
Mammal



Coyote Mammal



American Bald
Eagle bird



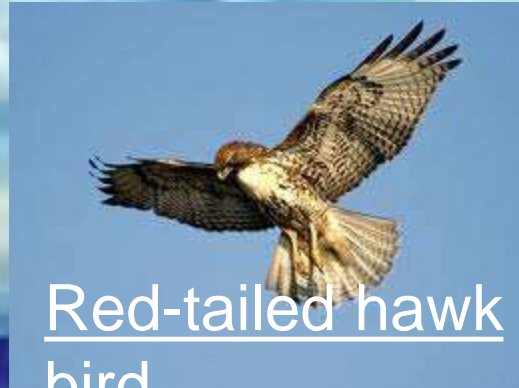
American Beech
tree

- Grass
lands are
located in
Midwest
America



Eastern cotton-
tailed rabbit
mammal

Grassland



Red-tailed hawk
bird

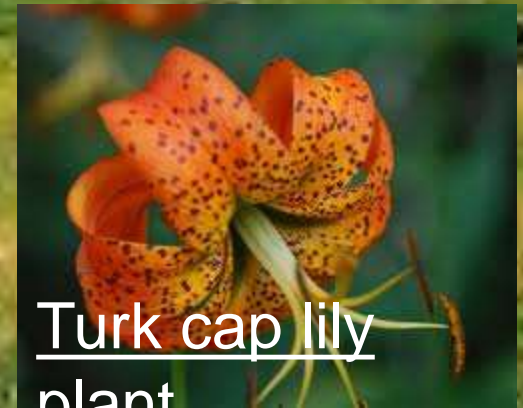


Wild Bergamot
plant

• Grasslands have very
few of rainfalls per
year.

• Grassland grow very
few of trees because
rain barley rains there.

• Grasslands are
covered with a lot of
grasses in this biome.



Turk cap lily
plant

Taiga

• Taiga's have tree's such as Needles.

• Needles have many qualities that help trees survive the cold in the taiga biome.

• Needles are leaves that make food.

• Taiga biomes are located in Canada and Russia in places that are cold and fairly dry



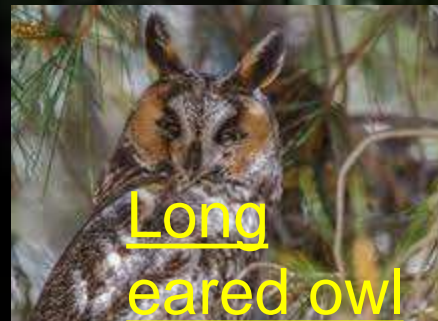
Wolverine
mammal



Eastern
Douglas Fir
plant



American black
bear mammal



Long
eared owl

Desert

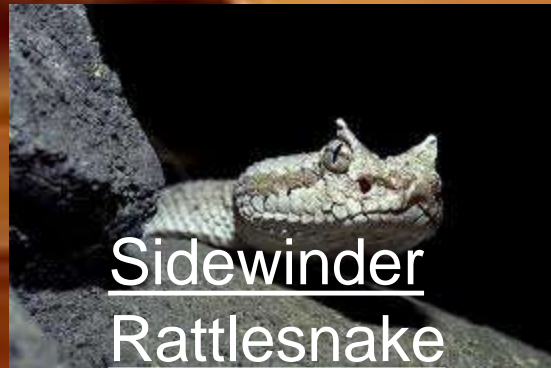
- Deserts cover about one-fifth of our planet



Black widow
Arthropod



Roadrunner Bird



Sidewinder
Rattlesnake
Reptile



Ocotillo Plant

- Many deserts are hot but some are cold most of the time.
- Not all deserts have dunes or sand dunes.
- Deserts don't get much rain or snow.

- Tundra's are located in the extreme North of Canada and Asia

Tundra



Polar bear Mammal

- The tundra is a very cold biome.
- In the tundra, a major limit factor is a short time of warm weather.
- The small plants in the tundra provide less food for animals that need shelter.



Caribou Mammal



Arctic Moss Plant



Pasque Flower

- Rivers are located all over the continent except Antarctica.

River

- Animals that live in rivers usually don't live in the ocean.
- Not only fish live in the river.
- River otters and ducks live in the river too.



River otter Mammal



Walleye Fish



River moss Plant



Wood duck Bird

- Oceans are located in all over the planet

Ocean



Sailfish
Fish

• The deepest point in the ocean is 36,198ft.

• The worlds oceans contain about 20 million of gold.

• The gray whale migrates 10,000 miles a year.



Starfish Fish



Lionfish Fish



Anemone Plant

- Wetlands are found in almost all over the region.

Wetland

- Wetlands collect and hold flood waters.
- Wetlands provide habitats for plants and animals.
- Wetlands absorb wind and tidal forces.



Marsh wren Bird



Muskrat Mammal



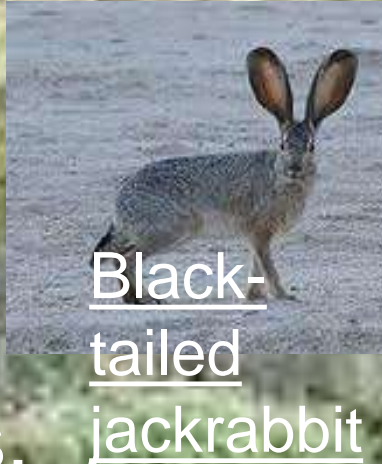
Mink Mammal



Cattail Plant

- The Chaparral biome is found in a little bit of the continents, the west coast of the United States and other continents.

Chaparral



- Chaparral create spirit and inspire the natural environment.
- Chaparrals increase the conservation protection of shrubland ecosystems.
- They help clarify fire and land management.